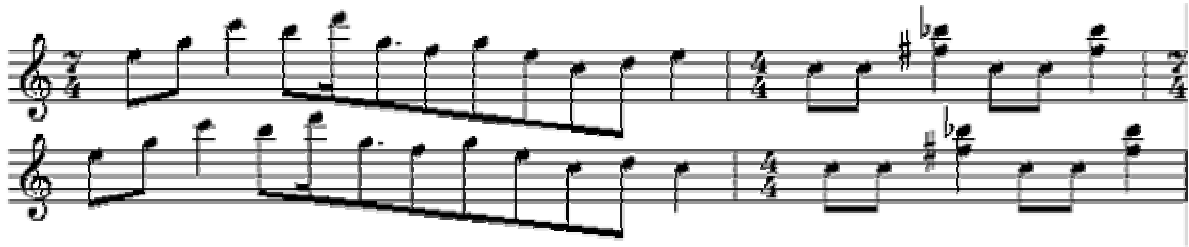


Tumbledown



(2nd bar: fig.1)

No Chord on C

It's just a matter of time a figure of speech that springs to mind
throughout the day

1
N.C. on C

As the minutes go by, a second thought, a moment lost, time ticks away

1
G C G C F Em D
G

and everything changes, forever never lasts, no such thing as always, it's
all too soon the past.

F/C C F/C C
Tumbledown, tumbledown, tumble, tumble, tumbledown.

1
F/C C F/C C
Tumbledown, tumbledown, tumble, tumble, tumbledown.
1

Dm6/A Am Dm6/A Am
Raingods with Zippos, a tin man with a heart

Dm6/A Am F G
an end with no beginning, a race without a start

F G F G F G
that you'll never win, that you cannot lose and you fall apart.

F/C C F/C C
Tumbledown, tumbledown, tumble, tumble, tumbledown.

1
F/C C F/C C
Tumbledown, tumbledown, tumble, tumble, tumbledown.

1
G7

Dm6/A Am Dm6/A Am Dm6/A Am
F G F G F G F G

N.C. on C

The Tarot declares a motion made a finger traps an empty glass.

1
N.C. on C

The needles begin to make their mark, you try to hide, you're leaving tracks,

G C G C
I dream of fire and water, dream of deserts, dream up plans,

F Em D G
like mountains and castles they're only grains of sand that

F/C C F/C C
Tumbledown, tumbledown, tumble, tumble, tumbledown.

1
F/C C F/C C
Tumbledown, tumbledown, tumble, tumble, tumbledown.

1
Dm6/A Am Dm6/A Am
Raingods with Zippos, a tin man's bleeding heart,

Dm6/A Am F G
an end with no beginning, a race without a start

F G F G F G
that you'll never win, that you cannot lose and you fall apart.

F/C C F/C C
Tumbledown, tumbledown, tumble, tumble, tumbledown.

1
F/C C F/C C
Tumbledown, tumbledown, tumble, tumble, tumbledown.

1

Ending: repeat piano intro from 34th bar